



Officers and Committee - 2018

President: Roger Lewis

Chairman: Anthony Waldbaum

Vice Chairman: Dianne Gilmour

Gen. Secretary Jenny Arnold

Hon. Treasurer Bob Sleeman
Hilmarton, 50 Northampton Road, Croydon.
CRO 7HT
Tel: (020) 8654 5814

Hon. Auditor Dick Allen

Committee Members:

Neil Collins
Salina Gani
Dianne Gilmour
Evi Trickey
Raymond Ore
Philip Sadler
Jessica Saraga

Also

Website entries Raymond Ore
Hire of Hooks Bob Sleeman
DVDs : Ken Head
Refreshments : Doug Fanthome
Website: Raymond Ore
<http://www.croydonartsociety.org.uk>

Welcome

Welcome to our spring newsletter. The seasons seem to pass so quickly, and suddenly here we are again in arguably the best season, full of hope and new growth. There is also a lot going on in the Croydon Art Society at this time, with ongoing and approaching exhibitions and events, so please read on and find out about the latest news, and a lot more besides.

Editorial

Time goes by so quickly doesn't it, indeed it seems unbelievable that 2019 is now one third gone. We have also started into this years' CAS exhibition programme, Time, it seems, generally goes so fast that this tends to creep up on us, that we have the possibility of exhibiting work, but perhaps have no pictures we consider worthy of exhibiting to hand, or even created. Could it be that in the winter time people tend to hibernate: We find that over the previous months we too have been in a bit of a sleep, not being our most productive, and then we suddenly have to render a good set of pictures for the spring exhibition.

Nature doesn't help us either in this predicament. The British winter, with its low light levels and cold conditions, with short, wet gray days, is not exactly conducive to the creative process. We then see a slow gradual and sometimes fitful progress away from wintry conditions, often punctuated with a return to full winter weather, and we continue to peer out of our windows maybe thinking 'I'm not bothering to go out to sketch in *that* weather'. All this goes on and then, abracadabra, a third of the year has passed us by

Well I'm pleased to observe that now things, at last, seem to be picking up. Nature is stirring and the days are getting noticeably longer. There is a sense that we are finally coming out of hibernation.

I guess these observations apply principally to those of us who tend to focus on landscape painting. It could be a good argument to concentrate upon indoor subjects during the winter, nice warmly lit still life set ups, with cosy interiors, instead of relying on those photographic artifacts of past summery days. But however we do it, I do wish everyone the very best in our Spring exhibition.

Phil Sadler

NEWS OF MEMBERS

New Members

Three applicants submitted their work for selection at the Monday evening meetings during the month of February two of whom were offered membership.

We are pleased to extend a warm welcome to Karen Plummer and Shahnaz Ishaq and hope they will enjoy the many activities of the Society.

Chelsea exhibition 2018

In the last issue of CAS news we omitted to report that Margaret Eggleton also participated in the Chelsea and the SGFA Exhibitions along with the other CAS members mentioned. Apologies to Margaret for this omission, and to anyone else if they were missed.

I would draw your attention to the item opposite on Members News. In order better to report all of the wide and varied activities of all the members of our busy Society, if you can, please send your news in for inclusion.. Who knows what might come of it.

The Spring Clocktower Exhibition

The CAS Spring exhibition in the Clocktower in Croydon is once again underway. The exhibition went up smoothly thanks to the hard work and tenacity of all who took part in the setting up process. 135 pictures were hung and two sculptures. Special thanks to Neil Collins who's meticulous prior preparation made the process run so smoothly. Well done and thanks to all who submitted works, I think the standard this year was once again excellent. Good luck as well, to all in the matter of sales.

Warlingham Art Group

If you or anybody you know enjoys painting in the company of other like-minded people, then you would be very welcome to come along to Warlingham Village Hall any Tuesday morning about 11.00am to meet us for a cup of coffee and to see if you would like to join us.

Further information from
Joan Aeschlimann: tel.01883 624 330

EXHIBITIONS

Royal Institute of Painters in Water Colours

Two CAS members have had work accepted in this years Royal Institute of Painters in Water Colours 207th Annual Exhibition . Congratulations to, Archie Niven, who has had one work accepted and Yellon Ran Huang who has had two works accepted. Particular congratulations go to Yellon because one of her paintings won The Frank Herring Easel Award for an outstanding work in the Exhibition. Very well done to Yellon.

'Positive Emotions'

Miguel Sopena is showing two of his works in a group exhibition entitled 'Positive Emotions' which is taking place at the Kunsthuis Gallery in North Yorkshire (Mill Green Farm, Crayke, YO61 4TT. If you are in the York area over the summer season perhaps take a visit. The exhibition is on from 5 April to 27 October 2019 with opening times Friday, Saturday and Sunday 11am-5pm (closed Mon-Thurs).



CAS Newsletter – Members' News

It's a great thing to share. So if you have taken part in any exhibitions or artistic endeavours, or if you have any forthcoming events, then why not post onto the Society's Facebook page or alternatively, feel free to send a quick e-mail to the editor, with a brief description of your event, with dates, etc for inclusion in the next CAS Newsletter. Send your news to Phil Sadler at p.sadler3@ntlworld.com. If you don't have access to e-mail then send hard copy to the address given on the last page of this edition.

CAS Facebook



For those of you on Facebook you may have noticed a bit more activity on our public page recently! The committee have plans in place to increase our social media presence, bringing positive publicity for the Society and for our Members.

So, what are our plans? We will focus on our Public Facebook page first and then other platforms. We'll publicise our fortnightly events, showcasing what we do. We'll highlight our exhibitions, encouraging more visitors and we will promote and support our members' work through our page.

Help us by liking the page, following us, liking and commenting on posts and joining in discussions, and, by giving our page a review.

We would love to feature what our members are up to as well and highlight your work. So please let us know what you are doing, and any up and coming exhibition and news so we can support you. If you'd like to be a featured artist be sure to include photos and a short blurb. You can send a message directly to our Facebook page to be featured or drop us an email.

If you have never visited the Croydon art Society Facebook page why not have a look : you can reach our Home page by following the link: <https://www.facebook.com/TheCroydonArtSociety/>



Spring/Summer Evening Activities

May 13th: Practical Evening – Portrait Model

Following on from Emil Nikolla's excellent demonstration last month, here is our chance to pick up on that inspiration and put into practice our own approach to capturing a likeness. A very enjoyable evening is in store for us, with a professional portrait model arranged. So, bring your materials along and enjoy the evening.



June 3rd: Talk : Joseph Wright of Derby.

Tonight, Rosalind Whyte is joining us to give a fascinating insight into the life and works of the 16th century artist Joseph Wright, famously known as the 'Painter of Light'. Rosalind is an experienced guide and lecturer at Tate Britain, Tate Modern, the Royal Academy and Greenwich. Attend early to ensure good seat.



June 17th : Talk & Demonstration – Karlo Zuno.

CAS member, Karlo Zuno is tonight going to give us a talk and demonstration on his working methods and techniques. Karlo is truly a multi-skilled artist who uses both traditional as well as innovative methods to create his fascinating art works. His demonstration will include the art of painting with candle smoke.



July 1st: Demonstration - Flower Painting

CAS member Sandi Jane Gray will tonight give a demonstration of flower painting. Sandi works primarily in watercolour and her love of colour certainly shines through in her beautiful flower paintings. Come along tonight to see how she produces these vibrant works.



Spring/Summer Evening Activities

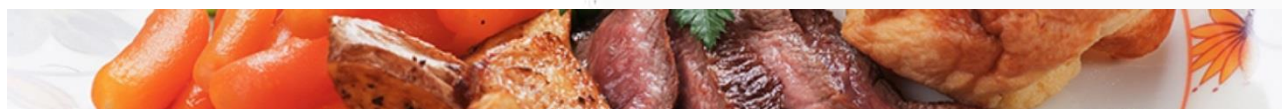
Summer Vacation: 15th July – 9th September 2019



Summer Lunch Sunday 18th August 2019 **Farleigh Golf Club, Old Farleigh Rd, Warlingham CR6 9PE**

This year our annual Summer Lunch is to be held at the Farleigh Golf Club in Warlingham. We would normally repair to Dick and Mary's home for our summer lunch, but this year we're letting their beautiful garden have a year out to recover from our normal attentions. The venue this time is to be the lovely setting of the Farleigh Golf Club, situated in the wide-open spaces of Farleigh Downs. The lunch comprises a sit-down carvery in a private room, with open access to an outside space for us to enjoy a convivial time in the beautiful summer weather. (we always get good weather don't we??)

More details to be circulated in good time for the event.



Evening Activities – How to Get There



HOW TO GET THERE

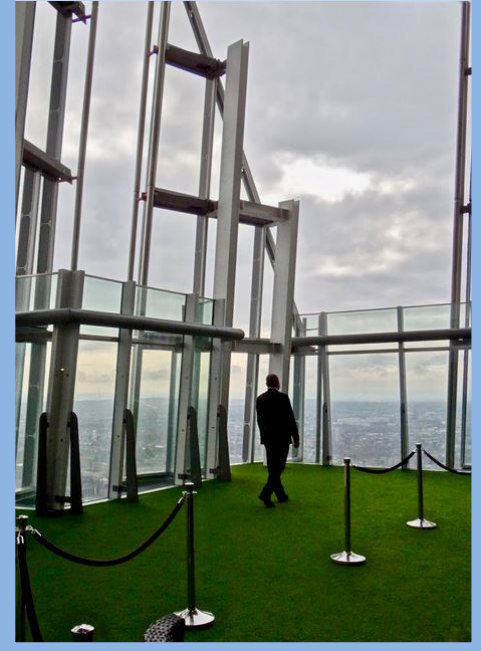
The venue for all the evening meetings is Christ Church Methodist, Minor Hall, Lower Addiscombe Road in Croydon, and the programme runs on alternate Monday evenings starting at 7.45pm. Although the venue is within the church premises, the access is from the rear car park off Canning Road. There is limited parking in the rear car park but we may also now park in the front car park off Lower Addiscombe Road. If both areas are full there is ample easy kerbside parking in Canning Road, although these are in marked bays there is no charge as the times are outside of the restricted hours.

Refreshments are provided at mid-session (30p charge) and we look forward to seeing you. From experience it's best to arrive early.

TOP OF THE SHARD ON A CLEAR DAY

By Roger Lewis

We arrived at the Shard reception area at midday with no waiting as we had pre booked anytime vouchers and the weather was sunny and clear. After proceeding through airport style security and politely ushered to the two stage high speed lifts by helpful staff,



We very quickly alighted onto an enclosed fully glazed gallery on the 69th floor for our first taste of the amazing views in every direction, later walking up to the 70th level open sky area and further spectacular views of up to forty miles from possibly the highest viewpoint in Europe

A camera [or binoculars] is a must for this experience as so many London landmarks are visible from this unique height. For an artist, a sketchbook would offer some spectacular subjects for drawing at unusual angles. For instance, Wembley football stadium, Battersea power station complex, Canary Wharf, O2 centre as is a marvellous view of St Paul's Cathedral and tall City buildings a bit nearer all held together by the ribbon of the Thames and it's continuous water traffic. The two tv masts at Crystal Palace are also quite prominent.



TOP OF THE SHARD ON A CLEAR DAY

(Cont.)



A bar is on hand on each floor for refreshments enabling anyone to sit at any chosen spot as tables and seats were placed next to the windows for relaxed viewing with no time limits.

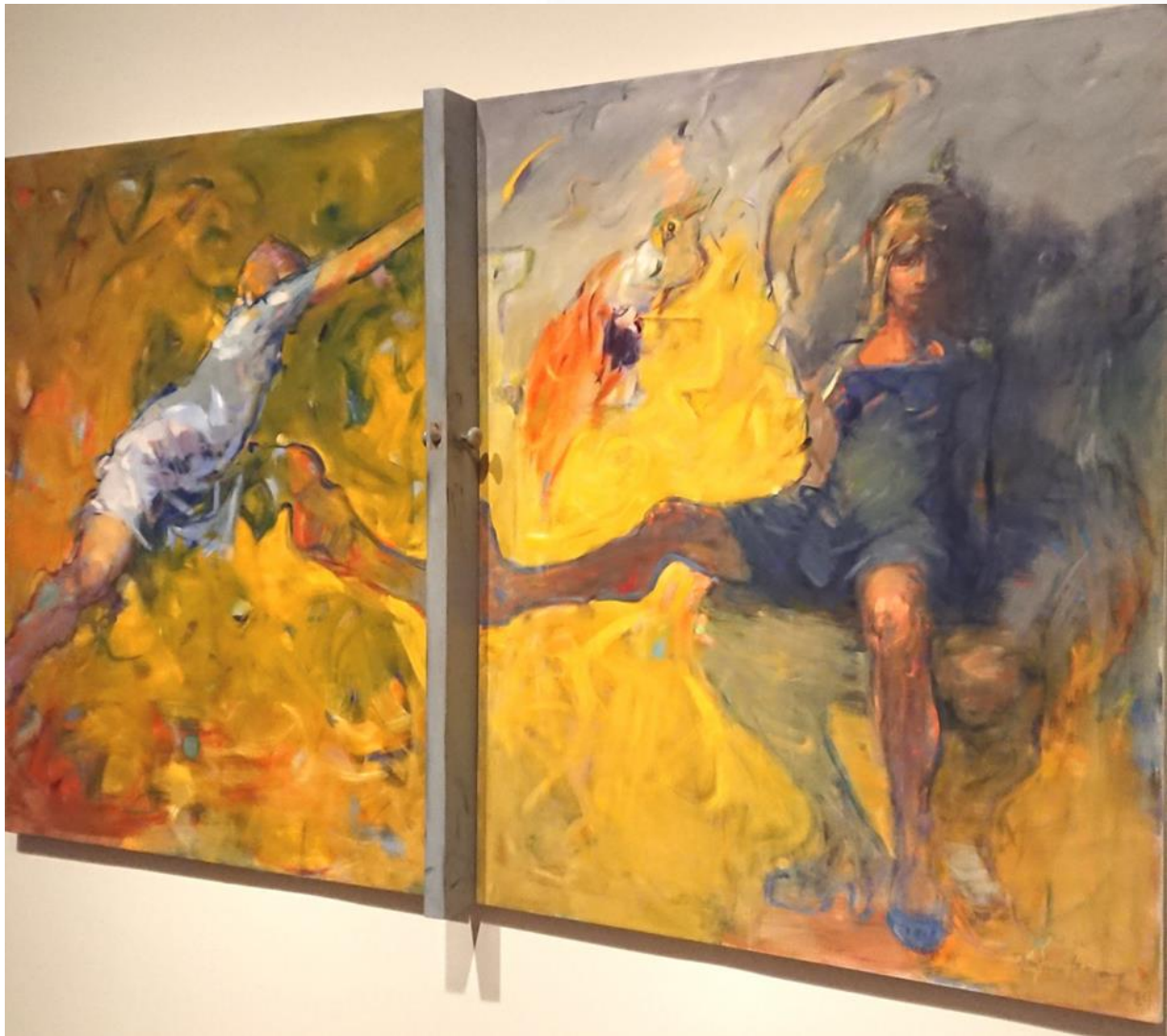
Our stay was around two hours giving us a truly memorable experience and stunning photos. We look forward to a further recommended sunset or night time viewing in due course.

Roger Lewis

Dorothea Tanning at Tate Modern until 9th June 2019

by Bob Sleeman

An American Surrealist (1910-2012) who sees doors that block or lead you through life. This one is from 1984 and is called "Door 84". It is very three dimensional in both content and construction.



Her self-portrait "Birthday" from 1942 defines the start of her surrealism in the year she met Max Ernst. They married in 1946 and stuck together until he died in 1976. The Tate examines her phases of work though a long sojourn in France until she moved from paint to the sewing machine and the items that are on display in the later rooms. In this case "Hotel du Pavot Chambre 202" is life size with images breaking through.





"Eine Kleine Nachtmusik" (1943) is perhaps familiar and shows a confrontation between the forces of grown up logic and the psyche of a child. The doors once again draw one deeper into the picture.

Pin cushion (*right*) might be a strange new mammal or perhaps an overgrown slug that moves around the gallery after we've all gone home.



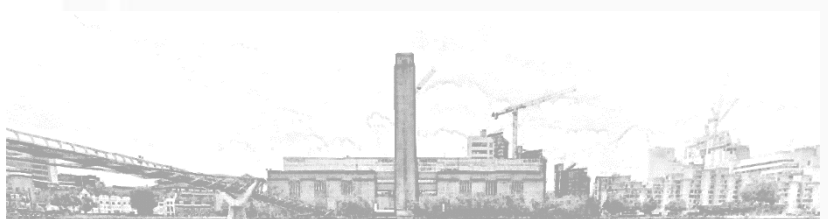
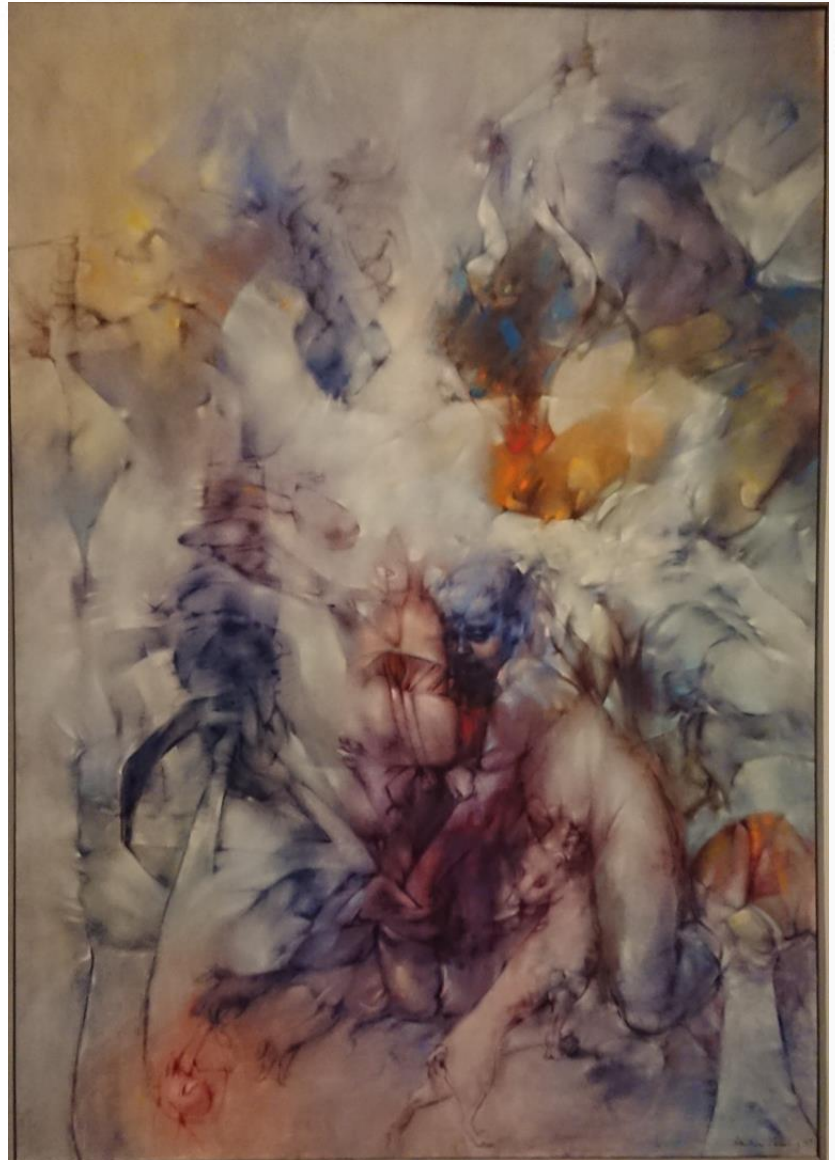
Notes for an Apocalypse (1978) had a strange effect on most visitors. We are searching for the meaning of these dynamic limbs that seem to be escaping from under the carefully laid table cloth complete with its organised folded creases that that define normality. Tanning often uses this immaculate table linen – a childhood memory. She was born in Galesburg, Illinois where "nothing happened but the wallpaper".



The dreamlike nature of her work seems familiar to me as recognisable shapes appear and disappear in the tangle of colours and shapes. This painting owned by the Moderna Museum in Stockholm is called "Imsonnies" (1957). It demonstrates a much looser brushwork and composition where the paint flows onto the canvas. Once again the visitors caused a traffic jam as they puzzled over the content of this work.



"Bonimenteurs" (1966) reminded me of the lino prints of Cyril Power and Sybil Andrews, demonstrating blocks of strong colour in highly defined shapes that are still an identifiable part of normal life.



Although not a name that jumps out as a "MUST SEE" the Tate has done an excellent job of showing the breadth of work that evolved from the backwaters of the USA.

More details are available at: <https://www.tate.org.uk/whats-on/tate-modern/exhibition/dorothea-tanning>

Bob Sleeman

On a Lighter Note

Some of us of a certain age may remember a programme on television entitled 'Tomorrows World'. It was a weekly bulletin, depicting breakthroughs at the cutting edge of science, which were destined, so they said, to become part of everyday life in the brave shiny new world of tomorrow.

To be fair to the programme, many of the things reported on did, in some form or another, eventually find their way into the world of today: ATMs, mobile phones, GPS and Digital cameras to name a few. However, the presenters, with relentless optimism, told us about no end of things new, futuristic and fantastic, giving the impression that we were on the brink of an unrecognisable and perhaps utopian future, quite different from the drudgery and gloom of people's mundane everyday life.

It seemed to me that one of the abiding themes of the programme was that very soon robots would be doing most things for us. As it turns out belatedly this may be coming true. But the robots we were told to expect would be more like human substitutes, with mechanical faces on computer screens and on wheels rolling about in our kitchens preparing our dinners, whilst we, taking our ease in the lounge, took all this smugly for granted. Well, I'm afraid this hasn't happened yet.

So in a similar vein I was interested to see some of the futuristic predictions currently being made::

1. Universally accepted digital currency,
2. High resolution bionic eyes available,
3. Most commercial flights taking place without pilots,
4. Buildings over 10km tall
5. Uploading of brain contents to computers
6. Living routinely to 150 years of age
7. Ice free Arctic in the summer months



Some of these seem more frightening than others, but like the predictions made in Tomorrows World perhaps the eventual realities will be substantially different. I'm off now for a trip on my hoverboard.

Phil Sadler

WEBSITE AND BOOK OF ARTISTS

There are still a great many members, new and old, who do not have an entry on the Society's website or in the Book of Artists which is on display at every exhibition. We have now completed giving our website a brand new look and feel, so now is a great time to get your name and a few of your pictures added.

At present this is FREE to all members so why not take advantage while it still is.

For details refer to our webmaster Raymond Ore ray@raymondore.co.uk

Get in touch

Contribute to future editions of the newsletter by sending your News/Exhibitions reports and any items of interest.

Please let the Editor, Phil Sadler have your contributions

Deadline: 15th August 2019

email : p.sadler3@ntlworld.com

15, Albury Road, Merstham, Redhill Surrey RH1 3LP